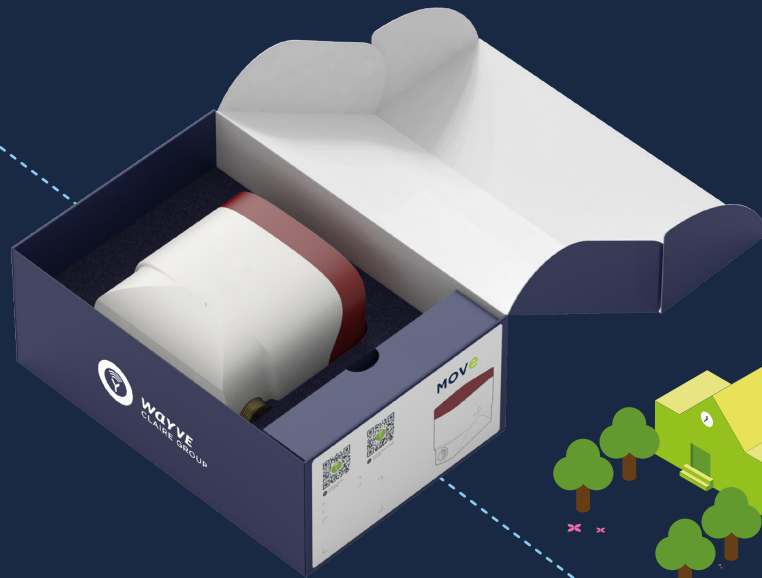




WAYVE
CLAIRE GROUP



MOVE

ACTIVATE... WATER

Water management issues in public places?
Schools, stadiums, lavatories...

Isolated buildings?

Consumptions based on seasonal peaks?

How to avoid overconsumptions? leaks?

**MOVE BOX IS A TURNKEY SOLUTION TO ACTIVATE
WATER IN CASE OF HUMAN PRESENCE**

**LEAKAGES
AND DAMAGES LIMITED**

**TRAVELS
MINIMIZED**

+33 (0)2 54 04 04 04 - info@wayve.fr - www.wayve.fr

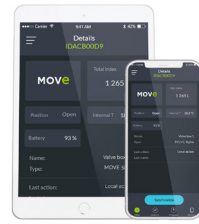


WEB PLATFORM

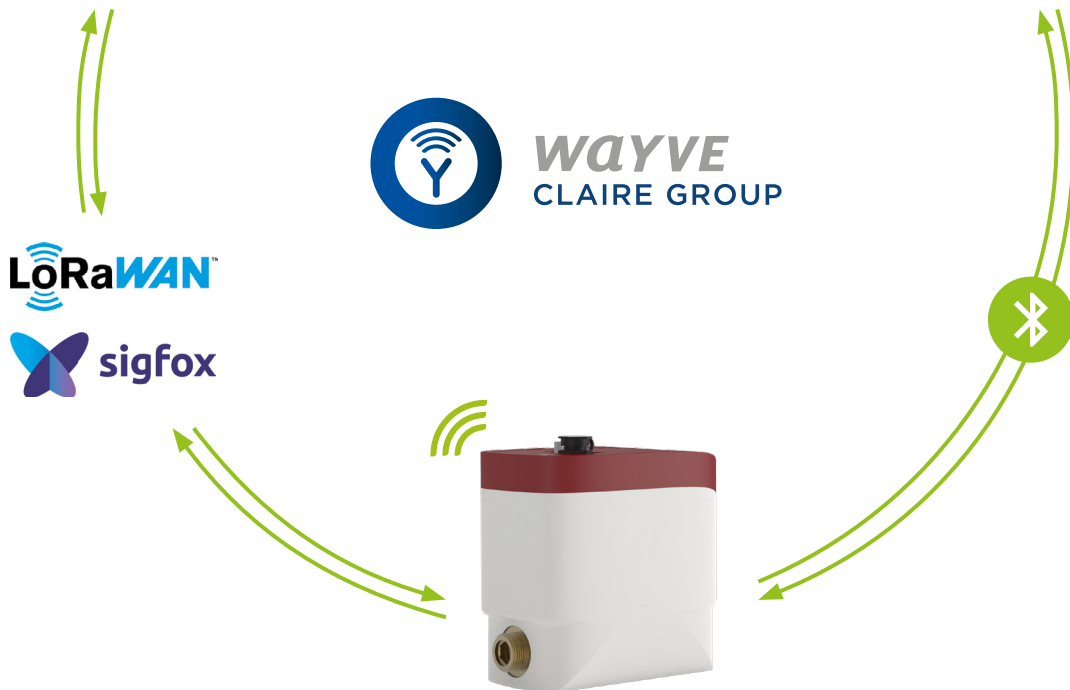


**DATA TRANSMISSION | REMOTE CONTROL
FLEET MONITORING | NOTIFICATIONS | LEAK ALERT
HISTORY AND STATISTICS | FLEET GEOLOCATION**

**APP
IOS & ANDROID TABLET
AND SMARTPHONE**



**OPENING TIMES PROGRAMMING
AND WATER OPENING IN RESPONSE TO MOVEMENT
SYSTEM CONTROL | HISTORY AND STATISTICS
SYSTEM GEOLOCATION**



**MOVE BOX
CONTROLLED & PATENTED 3 POSITIONS SYSTEM
(OPEN, CLOSED, LIMITED FLOW)**

ONLINE MODE

- | | | | | |
|--|---|--|---|--|
| <p>✂ ACCESS TO SERVICE</p> <ul style="list-style-type: none"> • Wayve box • Wayve mobile app • Quickstart guide • Customer support • Software updating | + | <p>⚙ EXPLOITATION</p> <ul style="list-style-type: none"> • Sigfox or LoRaWAN connection • Web platform • Optional assistance and delegated supervision | + | <p>🛡 SERVICE GUARANTEE</p> <ul style="list-style-type: none"> • 5 years commitment |
|--|---|--|---|--|

LOCAL MODE

- | | | |
|--|---|--|
| <p>✂ ACCESS TO SERVICE</p> <ul style="list-style-type: none"> • Wayve box • Wayve mobile app • Quickstart guide • Customer support • Software updating | + | <p>🛡 SERVICE GUARANTEE</p> <ul style="list-style-type: none"> • 5 years commitment |
|--|---|--|

Scan to access tutorials

